

# POWER BRUSH FIELD SELECTION GUIDE

The basics you need to know to help select the right power brush for your Welding & Fabrication needs. Get your job done faster, safer, and better.

## P PERFORMANCE LINE / INDUSTRIAL GRADE

Engineered to maximize performance in the most demanding surface conditioning applications. Offers the lowest cost-of-use and most consistent performance in heavy production environments.

## V VALUE LINE / PROFESSIONAL GRADE

Manufactured using the same exacting standards as other Weiler power brushes, but engineered to provide cost-effective use in less demanding environments.



**CONFLEX BRUSHES**  
Best for cleaning ID's, threads, and recessed areas



**END BRUSHES**  
Best for recessed areas & corners

**BEVEL BRUSHES**  
Best for fillet welds & corners



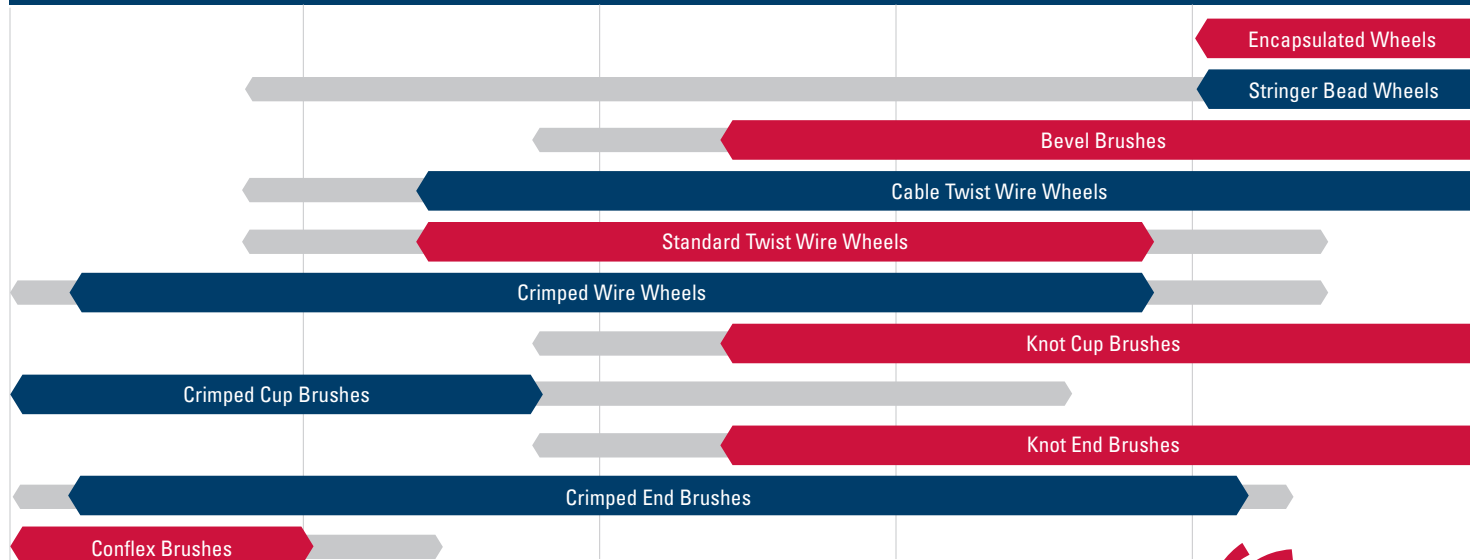
**CUP BRUSHES**  
Best for large surface areas

**WIRE WHEELS**  
Best for weld beads and targeted cleaning

APPLICATIONS

LEAST AGGRESSIVE

MOST AGGRESSIVE



# POWER BRUSH FIELD SELECTION GUIDE

## TOOL

Choose your power wire product by tool.



### RIGHT ANGLE GRINDER

Wire Wheels  
Cup Brushes  
Bevel Brushes



### STRAIGHT GRINDER

Wire Wheels  
Bevel Brushes



### DIE GRINDER

Wire Wheels  
End Brushes  
Conflex Brushes



### HAND DRILL

End Brushes  
Conflex Brushes



### BENCH GRINDER

Wire Wheels



### DRILL PRESS

End Brushes  
Conflex Brushes

## WIRE SIZE

To maximize brush life and reduce costs, always use the finest wire that will get the job done without excessive applied pressure or engagement with the brush.

Coarse		Medium to Coarse		Medium		Fine		Very Fine	
.035	.023	.020	.014	.0118	.0104	.0095	.008	.006	.005
LESS		Flexible						MORE	
MORE		Aggressive						LESS	
LESS		Resistant to Fatigue & Breakage						MORE	

## FILL MATERIAL



### Steel Wire

Carbon steel wire is the most durable power brush fill material for metalworking and heavy-duty cleaning applications.



### Stainless Steel Wire

Recommended when brushing corrosion-resistant or non-ferrous metals such as stainless or aluminum or when the brush is being used in a wet environment.



### Non-Ferrous Wire

(Brass, Bronze & Aluminum)  
These materials will not generate a spark in use, but lack the durability and aggression of carbon steel and stainless steel wire.

## CRIMPED VS. KNOT



### Crimped Wire Brushes

- **Greater flexibility** for light/medium duty applications
- Less aggressive than a knot wire brush
- Use for a broad range of applications
- Highly conformable for irregular surfaces



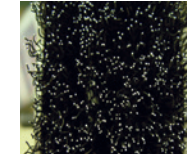
### Knot Wire Brushes

- Less flexible and **more aggressive** than crimped wire brush
- Use on parts requiring high-impact action

## TRIM LENGTH

### Long Trim

- Greater flexibility for irregular surfaces
- Shorter life



### Short Trim

- Stiff & aggressive
- Longer life



## KNOT TYPES

### Standard Twist



Flared at the head, providing a larger footprint and some flexibility for use on irregular surfaces. Sharp wire tips make this knot aggressive right from the start.

### Hurricane Twist



Provides smoother operation but sacrifices aggressive cleaning action.

### Cable Twist



Provides very aggressive brushing action. Sharp wire tips make this knot aggressive right from the start.

### Stringer Bead Twist



Thinner, tighter knots make it ideal for high-impact action. Used for tight areas, corners, and root pass weld cleaning. Sharp wire tips make this knot aggressive right from the start.

